

2024 CDCB ANNUAL REPORT

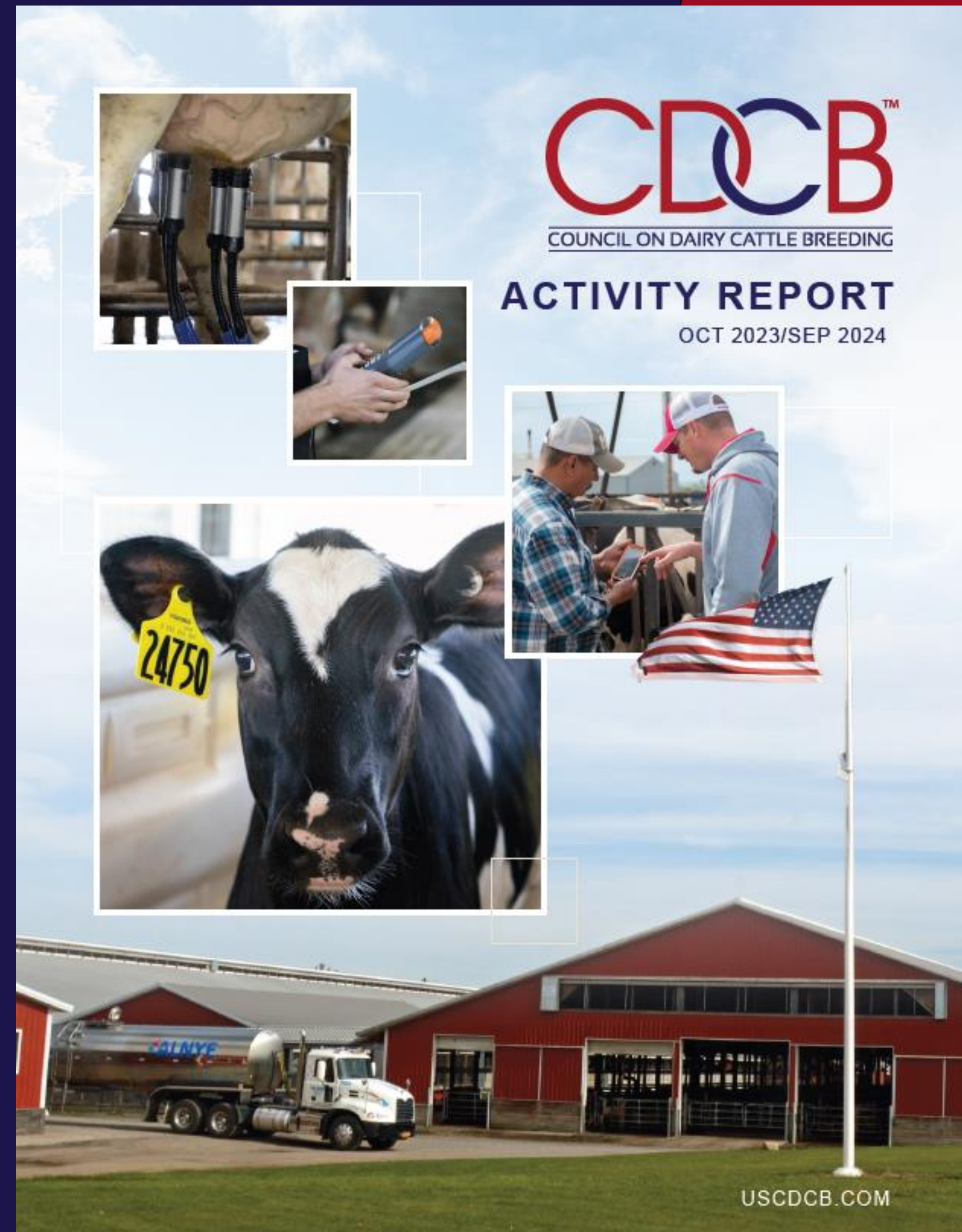
João Dürr, CEO

CDCB Industry Meeting

Madison, WI – October 2, 2024



CDCB Activity Report Oct 2023 – Sep 2024



ACTIVITY REPORT

OCT 2023/SEP 2024



| | |
|---------------------------------------|-------|
| CDCB BOARD CHAIR REPORT..... | 3 |
| CEO COLUMN..... | 4 |
| CDCB PERSONNEL..... | 5 |
| BOARD OF DIRECTORS..... | 6 |
| WORKING GROUPS & TASK FORCES..... | 7 |
| YEAR IN REVIEW..... | 8-9 |
| GENETIC EVALUATIONS & OPERATIONS..... | 10-11 |
| CDCB BY THE NUMBERS..... | 12 |
| DATA PROVIDERS..... | 13 |
| DATA STEWARDSHIP..... | 14-15 |
| INNOVATION..... | 16-17 |
| RESEARCH & DEVELOPMENT..... | 18-19 |
| OUTREACH..... | 20-21 |
| STRATEGIC PLAN & BRAND MARKS..... | 22 |
| FINANCIAL REPORT..... | 23 |

CDCB Board of Directors



Robert Fourdraine



Steven Smith

CDCB IN NUMBERS

GENOTYPES IN NATIONAL COOPERATOR DATABASE MANAGED BY CDCB



9.4 MILLION
genotypes in world's largest
animal database. *(September 2024)*

GENOTYPES



10%
JERSEY
89%
HOLSTEIN



72
COUNTRIES
with animal genotypes
in database



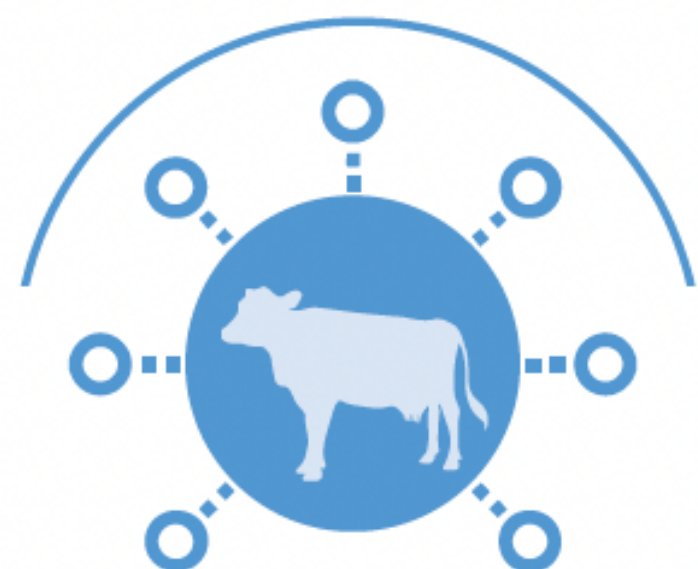
7% of genotyped
animals are male



93% of genotyped
animals are female



IN 2023, CDCB DATABASE INTEGRATED >3.2M LACTATION RECORDS AND >1.4M GENOTYPES FROM DAIRY ANIMALS



49 TRAITS

calculated by CDCB

86M

animals received CDCB
evaluations (*Aug 2024*)



431K

Male



7.8M

Female

Animals received a genomic evaluation (*Aug 2024*)

4

selection indexes

5

production traits

20

health, fertility & calving traits

22

conformation traits & composites

2

feed efficiency traits

STRATEGY



ADAPT TO CHANGES

Speed up turnaround
Prioritization process
Improve business process

DEVELOP TALENTS

Nurture next-gen
scientists & leaders
Talent retention
Succession planning

DIVERSIFY PORTFOLIO

Monetization strategy
Diversify market presence
Customization

FOSTER INNOVATION

Artificial intelligence
Diversify research
Data analytics
Risk management

IMPROVE COMMUNICATION

Stakeholders' education
Advocacy & public
engagement
Unified message

SECURE DATA STREAMS

Increase value added
Data quality
Embrace new data streams
Emerging traits
Data security

STRENGTHEN BRANDING

Marketing
IP protection
Branding & awareness

STRENGTHEN PARTNERSHIPS

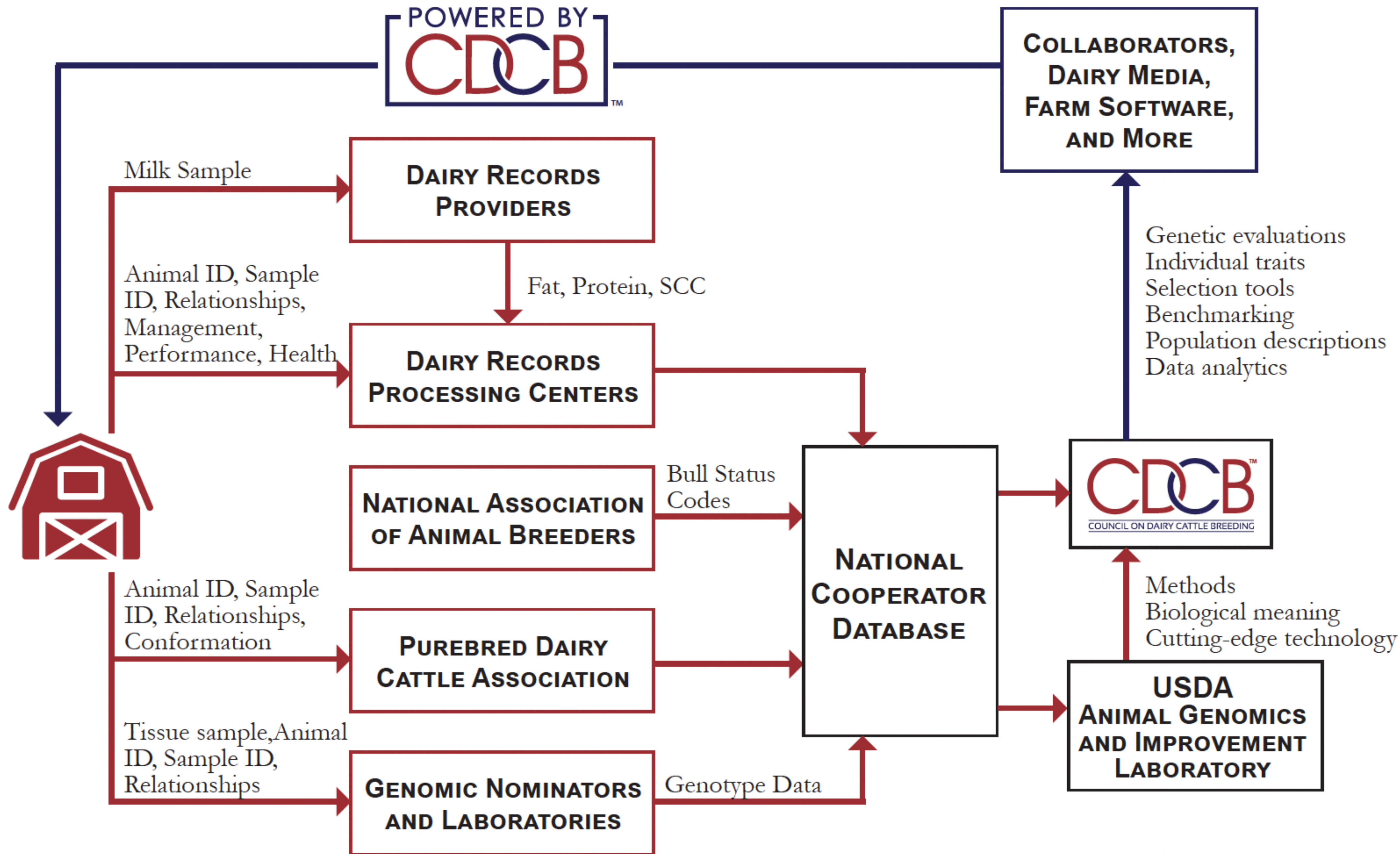
Stakeholder engagement
Cross-sector collaboration
R & D network
Strategic partnership

DATA

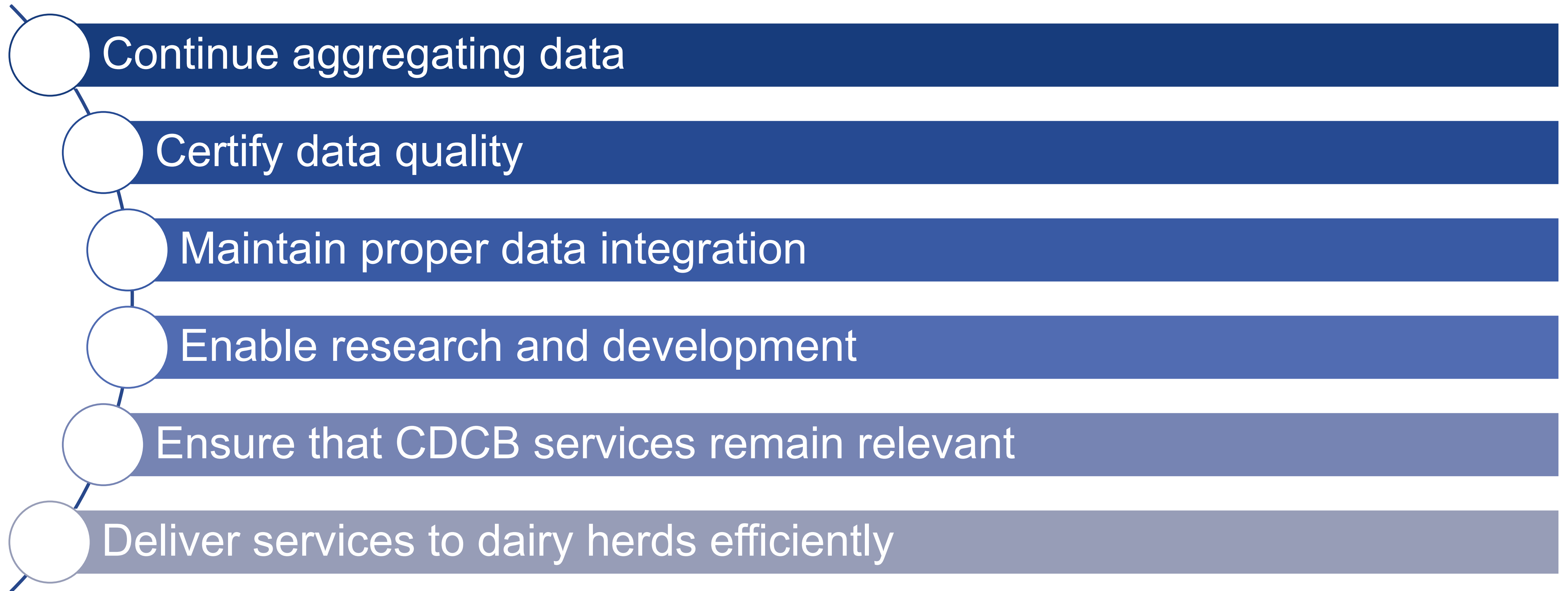
National Cooperator Database Purpose

Sustain **state-of-the-art research** and develop **data-driven processes** that **empower dairy producers** to effectively and **sustainably manage** their businesses by providing valuable **insights and tools** for informed decision-making.





National Cooperator Database



TALENTS

CDCB Team



Lillian Bacheller
*Senior Applications
Developer*



**Javier
Burchard, Ph.D.**
Chief Innovation Officer



**José Carrillo,
Ph.D.**
Chief Data Officer



**Malia
Caputo, Ph.D.**
Associate Research Scientist



John B. Cole, Ph.D.
*Chief Research and
Development Officer*



Rob Cooper
Business Manager



Chip Donatone
Dairy Data Architect



João Dürr, Ph.D.
Chief Executive Officer



Cindy Ferrier
Office Manager



**Heather Adams
Enzenauer, Ph.D.**
Applied Geneticist



**Kristen Parker
Gaddis, Ph.D.**
Geneticist



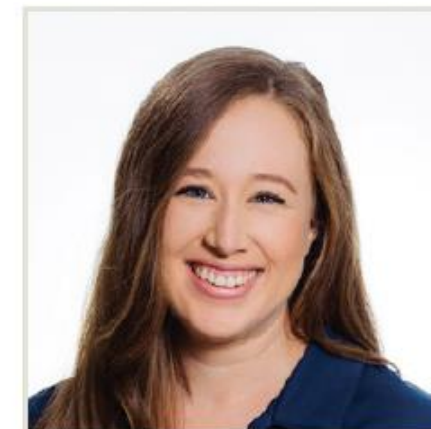
Courtney Hoff, M.S.
Data Support Specialist



**Gerald Jansen,
Ph.D.**
Technical Advisor



**Andres
Legarra, Ph.D.**
Senior Geneticist



Ashley Ling, Ph.D.
Support Scientist



Jhamal McKee
*Junior Systems
Administrator*



**Taylor Marie
McWhorter, Ph.D.**
Geneticist



Jay Megonigal
IT Manager



**Rodrigo Mota,
Ph.D.**
Applied Geneticist



**Ezequiel
Nicolazzi, Ph.D.**
Chief Operation Officer



**H. Duane
Norman, Ph.D.**
Technical Advisor



George Onoh, M.S.
Data Specialist



Frank Ross
System Administrator



Katie Schmitt
Outreach Specialist



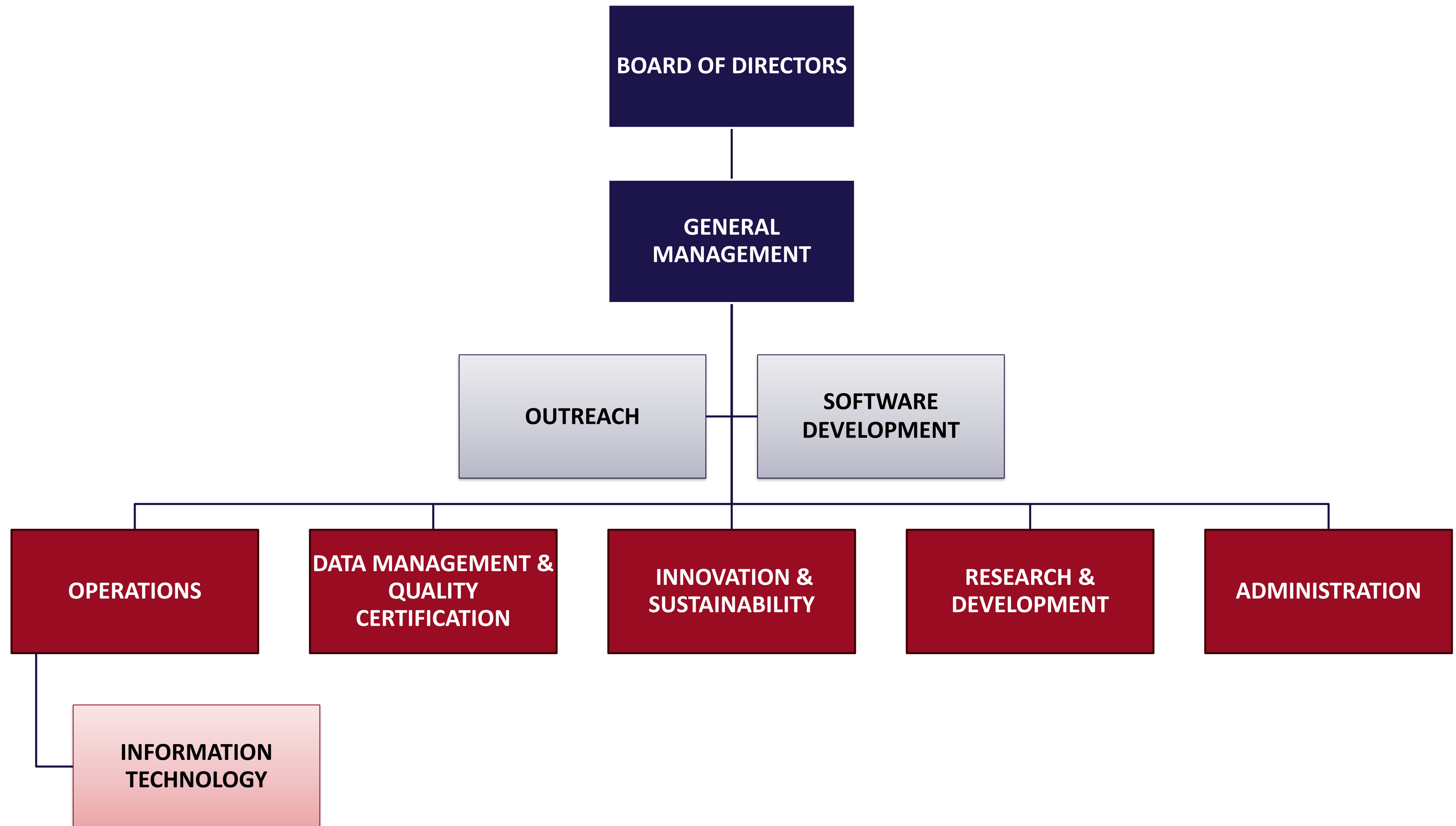
**Kaori Tokuhisa,
MSC**



**George
Wiggans, Ph.D.**



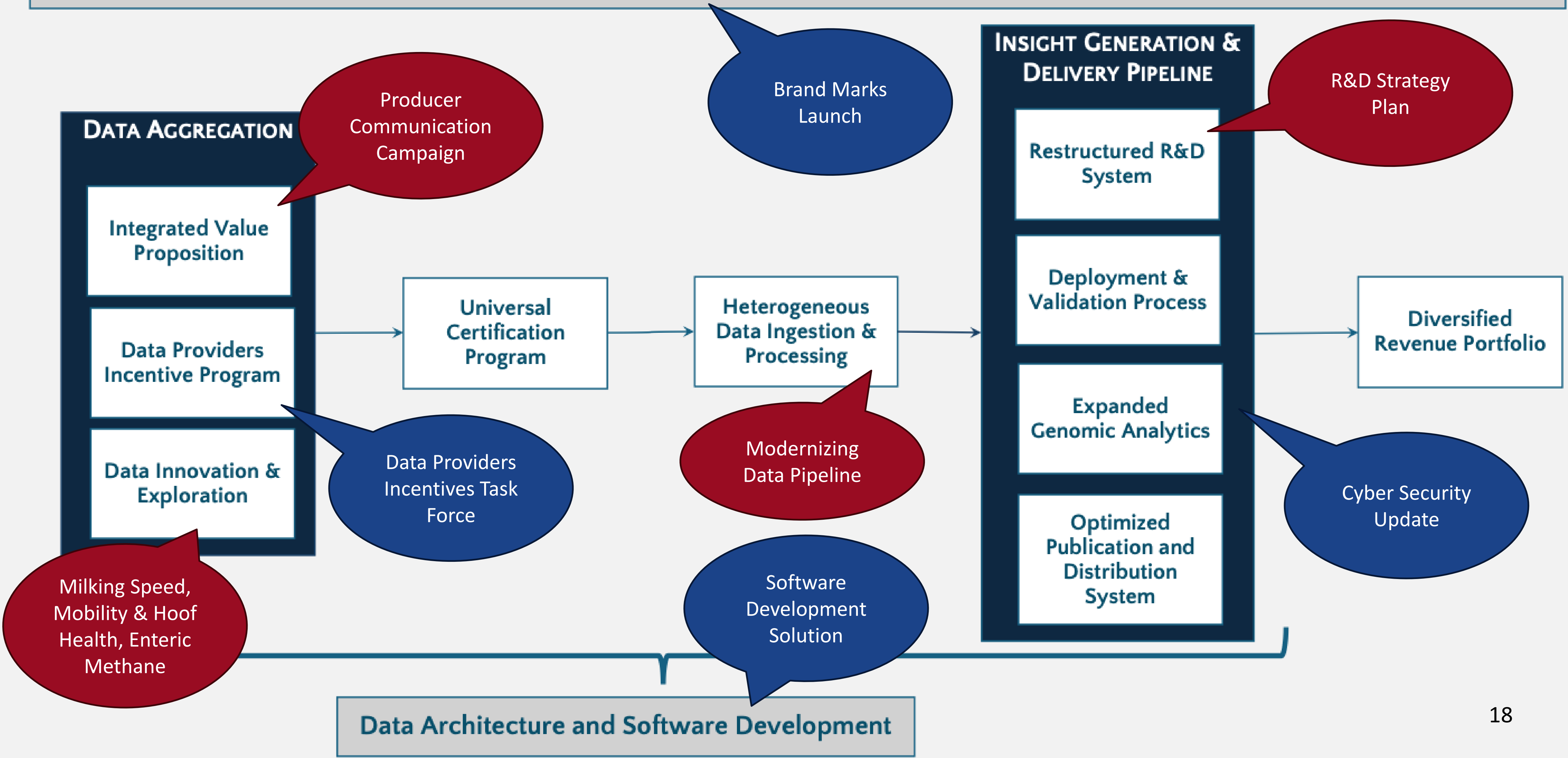
**Xiao-Lin (Nick) Wu,
Ph.D.**



PROCESSES


CDCB GOVERNANCE

Outreach and Communication

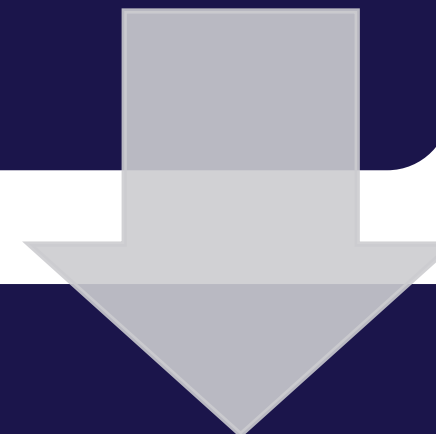


TAKEAWAY

The CDCB system continues to expand in both scale and value, playing a pivotal role in the dairy industry's success.




This growth is only possible thanks to the dedication and engagement of thousands of dairy producers who contribute to the National Cooperator Database.



To maintain the relevance of the services provided and meet the ever-evolving demands of the industry, the system must be continually modernized, and its processes reimaged.

Fortunately, the foresight of the visionaries who founded CDCB established a sustainable business model, ensuring the necessary investments to keep the system robust.



This enables the dairy industry to benefit from a pre-competitive support system, empowering producers with cutting-edge technological solutions.



Together, we are not just preparing for the future—we are shaping it.



“The best way to
predict the future is to
invent it.”

Alan Kay



Thank you!